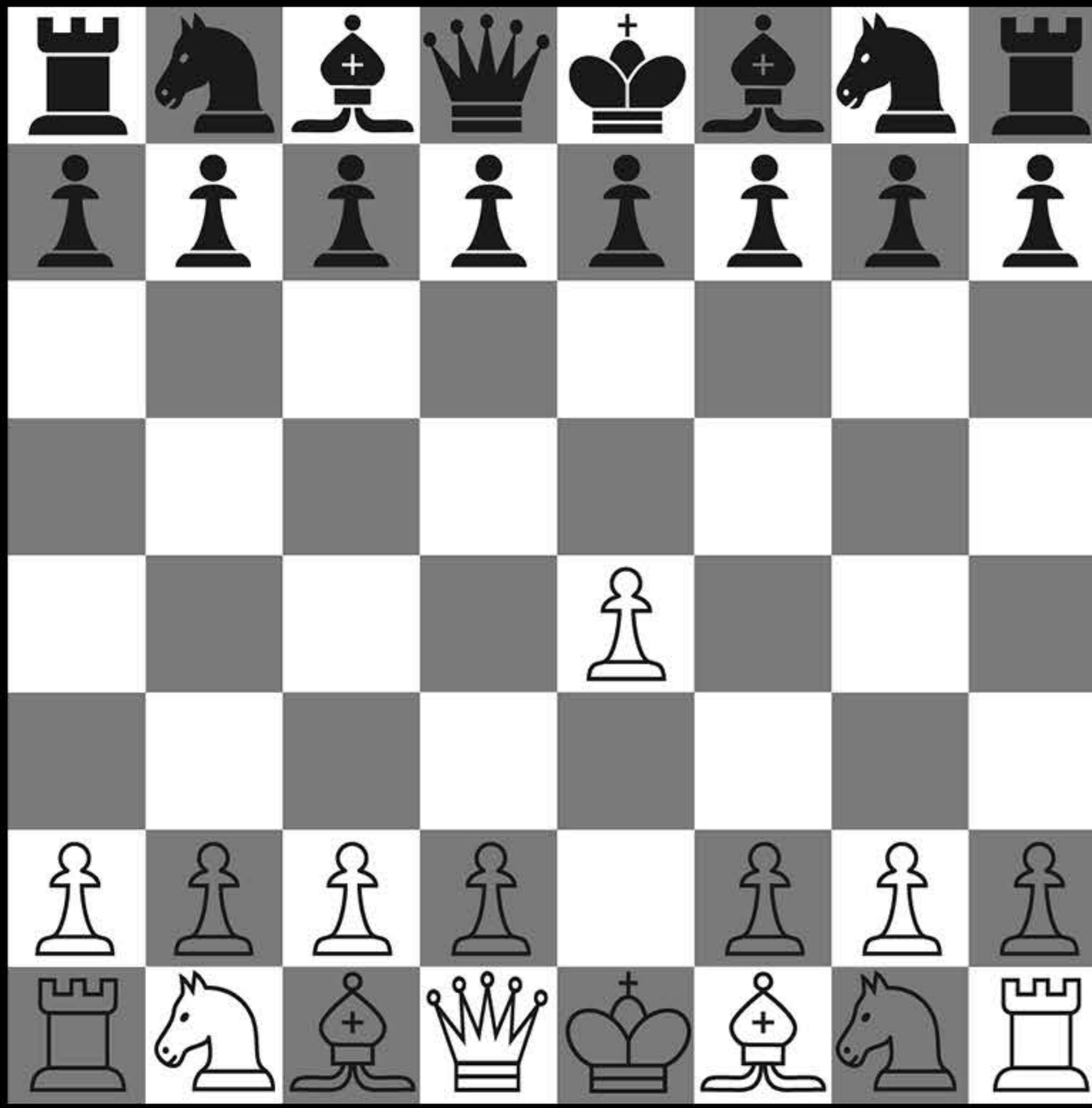


Chess in Numbers

Chess has been around for over 1000 years. Hardly any other game has fascinated people for so long. It is also probably the most analyzed hobby in the world. Nevertheless, the game has not been solved until today, which keeps chess interesting. That's why you can find some numbers about chess on this sheet.

Most popular opening move: e4, the king's pawn game.



Highest Elo ever reached: 2882

By the norwegian prodigy Magnus Carlsen in may 2014 at the age of 23. This led to him being widely regarded as the greatest Chess player of all time.

1'057'320'754

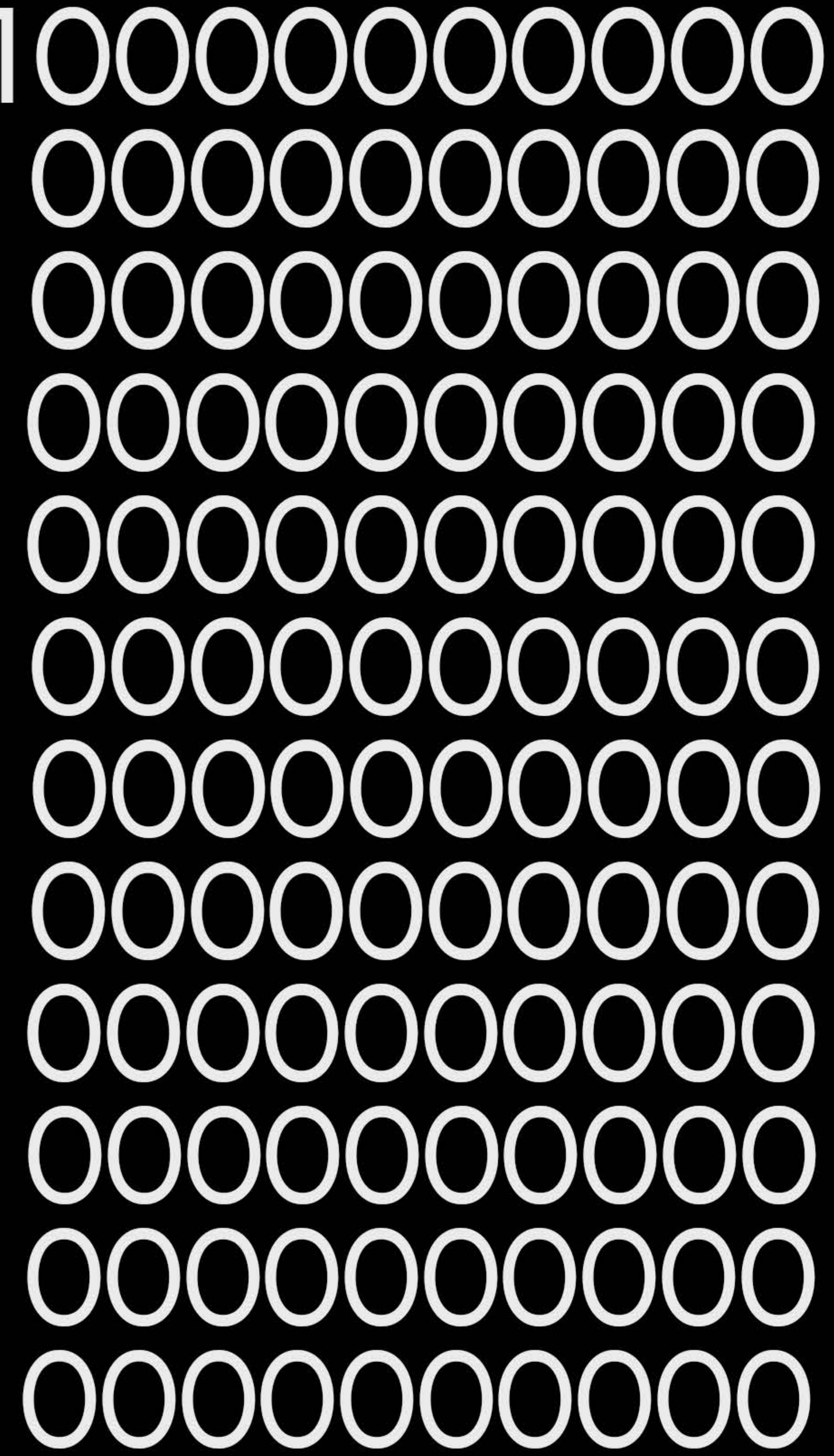
Games were played on the website chess.com by 2023. It remains the most popular chess website.

Win percentage of white, the first person to move:

56

40

Moves is the length of the average chess game



Estimated possible games

Also called the Shannon number, is an extremely large number used to estimate the game-tree complexity of chess. It is estimated to be around 10^{120} , indicating the vast number of possible positions and moves in the game.